



# *The* **ARLINGTON PLAN 23**

**4 Bedrooms • 3 Bathrooms • 3 - 5 Car Tandem Garage • 3,517 Total Sq.Ft. • 3,178 Finished Sq.Ft**

## **Windsor Ridge's newest ranch plan!**

The Arlington is a modern prairie style home with a refreshing flare! It's vaulted ceilings offer dramatic clean lines for a welcoming moment of awe! As you enter The Arlington, one senses an invitation of warmth with a grounded security and a continual flow of thoughtful design. Your home will be a space of relaxation for entertaining evenings as you cozy up to the fireplace on a Colorado evening.

Attention to detail is remarkable, the fixtures are a mixture of value and luxury, each hand selected for fit, finish and style. There is truly a perfect blend of architectural detail, natural light and open space for personalizing your new home.

The Arlington offers great flexibility for any lifestyle. One can easily imagine the home decorated in numerous styles and themes. The gourmet kitchen with all the right ingredients creates a sense of hearth and becomes the foundation for family gatherings and entertaining for years to come.

The Arlington offers a 3 - 5 car tandem garage. The finished lower level with additional bedrooms and entertaining areas gives you plenty of room to expand.



*Windsor Ridge*  
**HOMES**

**WindsorRidgeHomes.com**

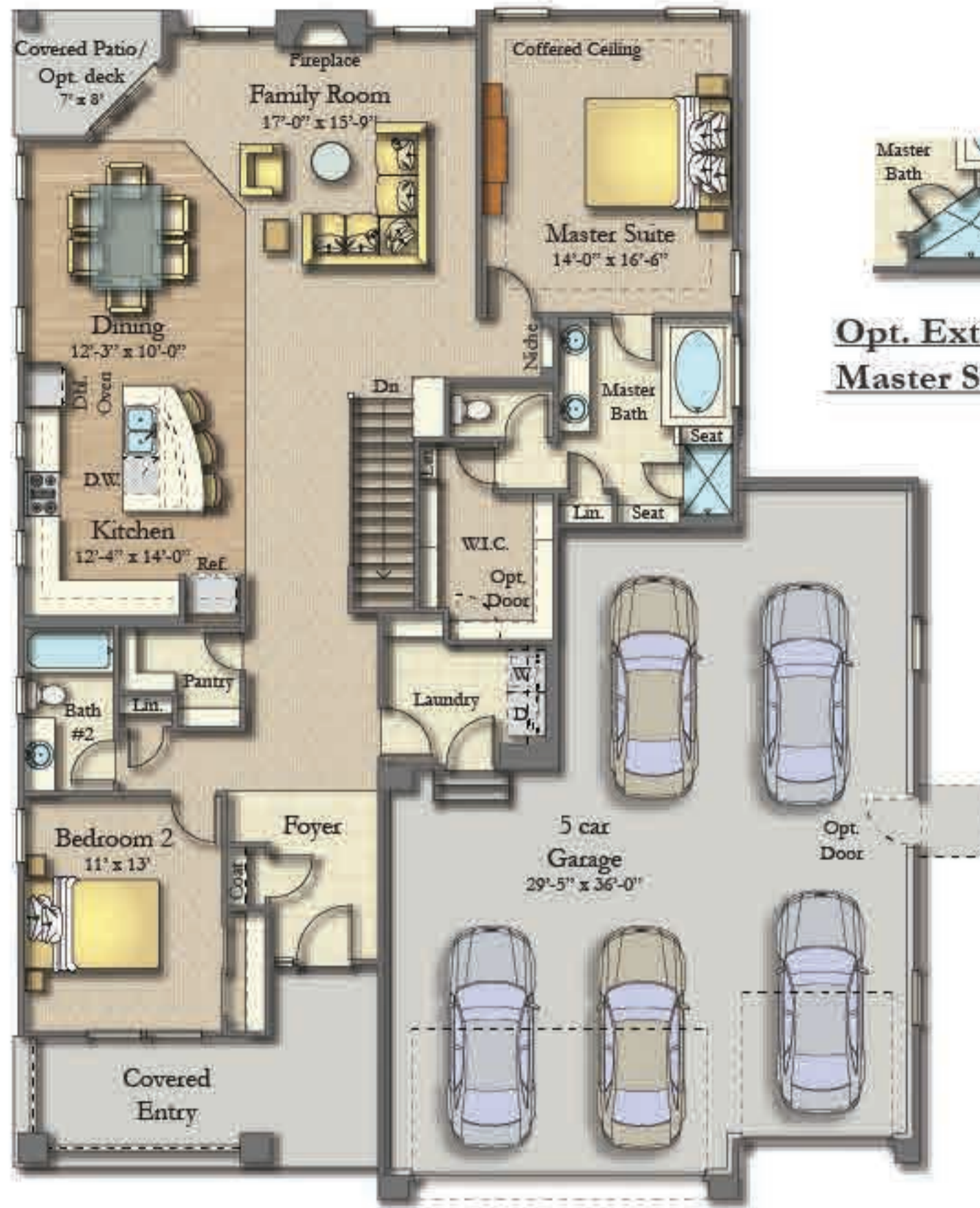
# The ARLINGTON floorplan

4 Bedrooms • 3 Bathrooms • 3 - 5 Car Tandem Garage

3,517 Total Sq.Ft.

3,178 Finished Sq.Ft

Plan 23 Pictured

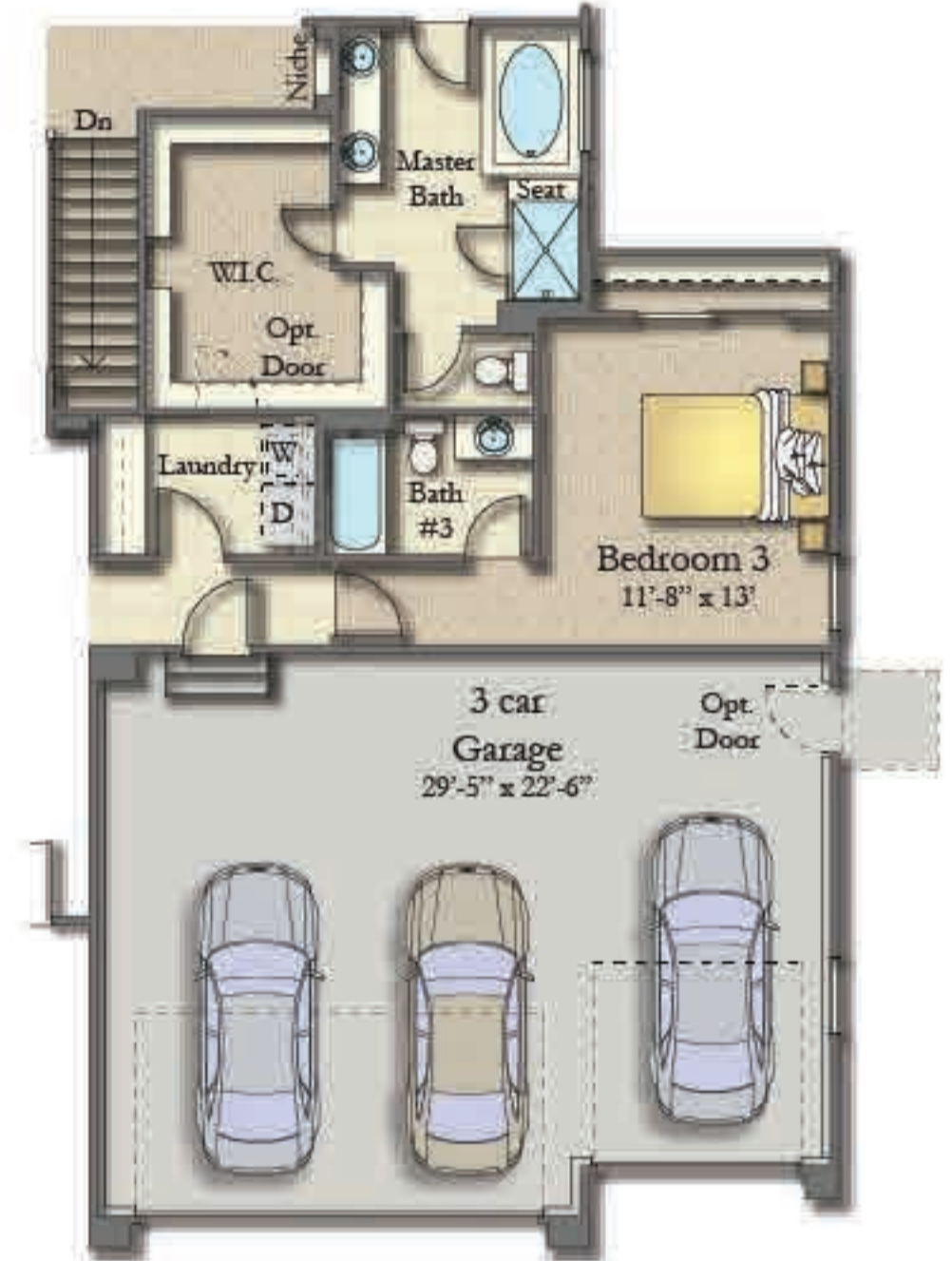


**MAIN LEVEL**  
1,764 SQ.FT.

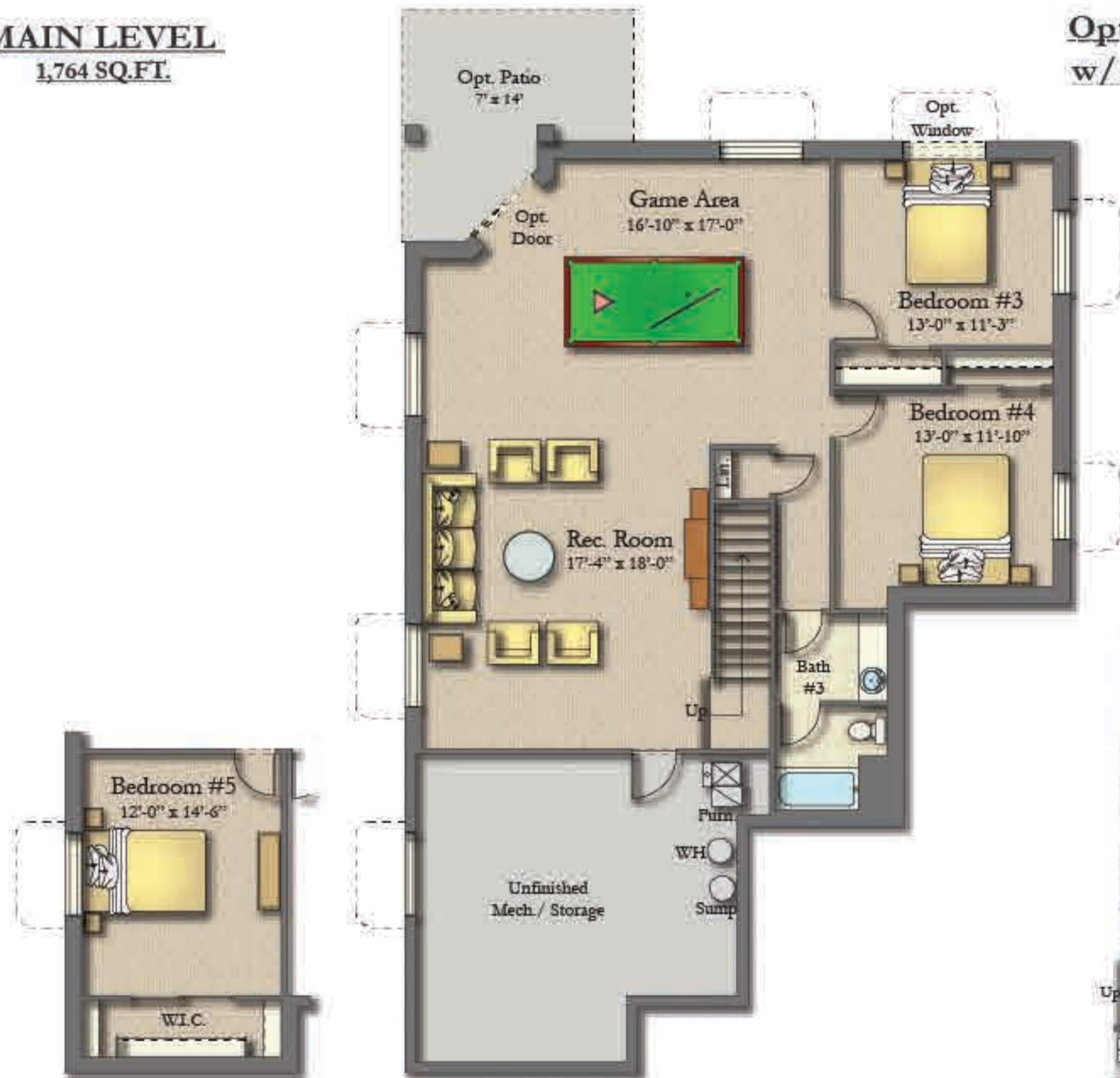
### Arlington 3 Car Garage

Main Sq.Ft.	- 2,060	
Basement Sq.Ft.	- 1,753	Finished Sq.Ft. - 1,414
Total Sq.Ft.	- 3,813	Finished Sq.Ft. - 3,474
Opt. Basement Sq.Ft.	- 2,049	Finished Sq.Ft. - 1,609
Total Sq.Ft.	- 4,109	Finished Sq.Ft. - 3,669

**Opt. Extended Master Shower**

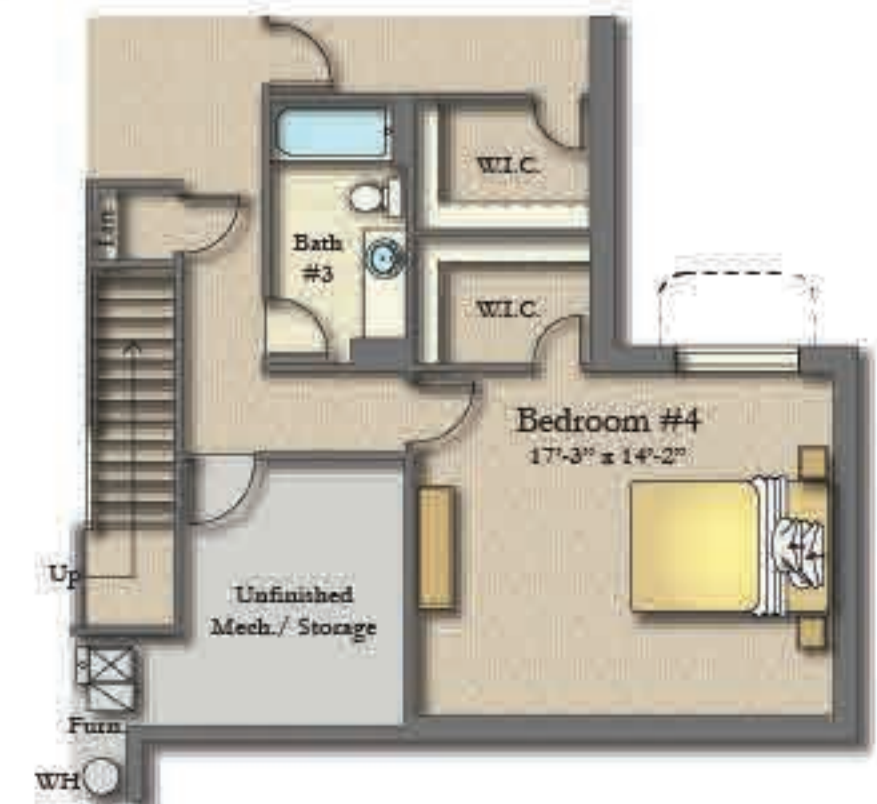


**Opt. Bedroom #3 w/ 3 Car Garage**



**Opt. Bedroom #5**

**BASEMENT LEVEL** 1,753 SQ.FT.  
(FINISHED LEVEL 1,414 SQ.FT.)



**Opt. Bedroom #4 w/ 3 Car Garage Only**