



The **CHESAPEAKE**

4 Bedrooms • 2.5 Bathrooms • 4 Car Garage • 3,311 Total Sq.Ft. • 2,295 Finished Sq.Ft

Elegance and sophistication best describe this two-story home. Luxurious finishes throughout so you never compromise functionality.

The dramatic pillared entrance, in conjunction with a 4-car garage, gives this home a striking impression. A two-story vaulted foyer suggests regality, but the main level layout is practical for a family-oriented lifestyle.

Gatherings of all types are effortless and comfortable with the great room style kitchen, dining and family rooms.

Upstairs you will find all four bedrooms, two full bathrooms and the convenient upper level laundry.

The luxurious master suite is designed with you in mind and includes a coffered ceiling with ceiling fan and a 5 piece spa-like bathroom and over-sized walk in closet.

A full unfinished basement provides ample storage space and the option for future expansion.

Windsor Ridge Homes offers every one of these luxury features and finishes standard with this floor plan.



Windsor Ridge
HOMES

WindsorRidgeHomes.com

The CHESAPEAKE floorplan

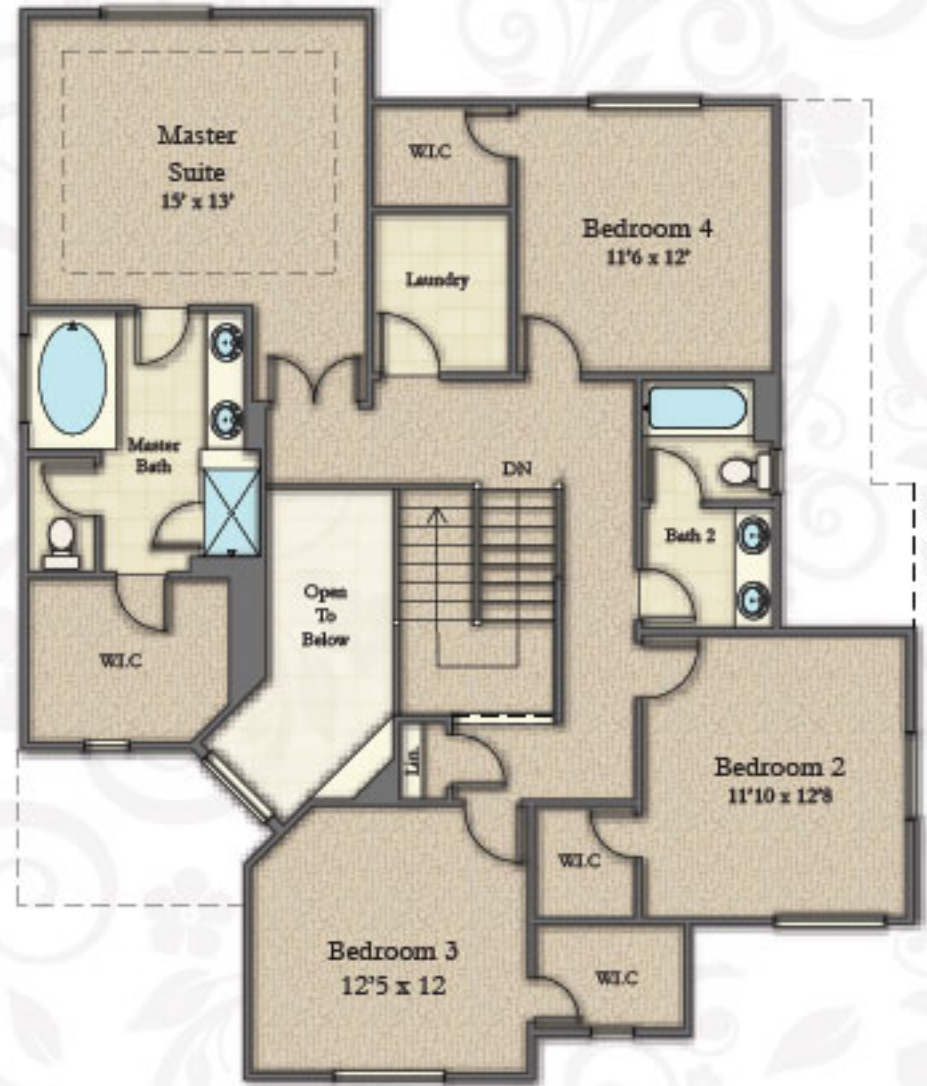
4 Bedrooms • 2.5 Bathrooms • 4 Car Garage

3,311 Total Sq.Ft.

2,295 Finished Sq.Ft



MAIN LEVEL
1,001 SQ.FT.



UPPER LEVEL FLOOR
1,294 SQ.FT.



BASEMENT LEVEL
1,016 SQ.FT. UNFINISHED
880 SQ.FT. FINISHED (OPTIONAL)

♦♦Specifications subject to change with or without notice.♦♦