



The **HUDSON**

4 Bedrooms • 2.5 Bathrooms • 3 Car Garage • 3,227 Total Sq.Ft. • 2,239 Finished Sq.Ft

This welcoming two-story home is functional but far from ordinary!

An open vaulted entryway surrounded by a loft-like upper level gives this home a contemporary feel.

The dream kitchen opens to the family room and features 42" cabinetry, slab granite countertops, a counter bar and stainless steel appliances.

Everyday living is convenient with upper-level laundry and walk-in closets.

The spacious Master bedroom is complete with a 5-piece bathroom suite featuring a large soaking tub, ceramic tile and granite countertops.

All of our luxury "upgrades" come standard with this home.

The tandem 3-car garage is spacious yet does not distract from the front of the home.



Windsor Ridge
HOMES

WindsorRidgeHomes.com

The HUDSON floorplan

4 Bedrooms • 2.5 Bathrooms • 3 Car Garage

3,227 Total Sq.Ft.

2,239 Finished Sq.Ft



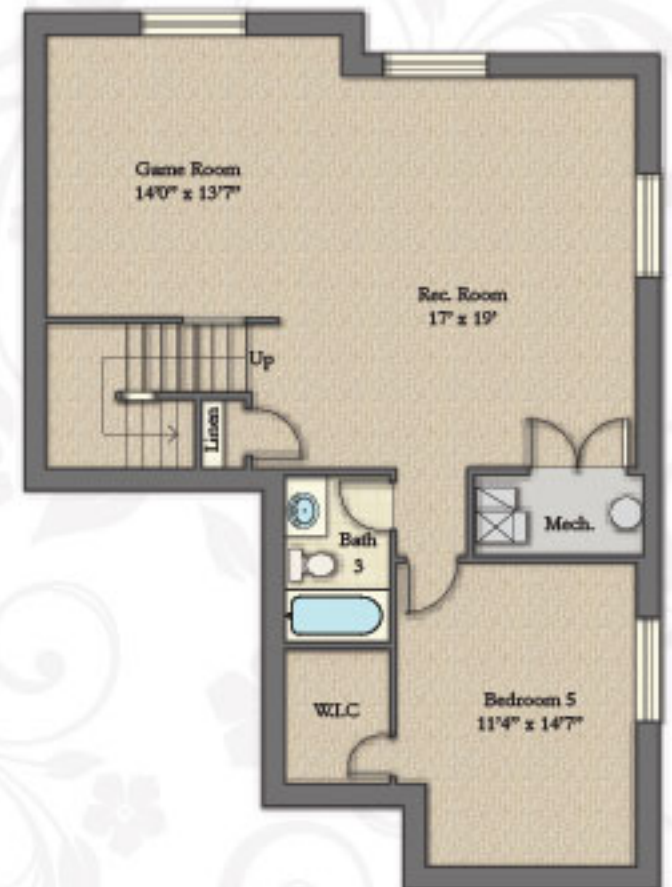
MAIN LEVEL
988 SQ.FT.



UPPER LEVEL
1,251 SQ.FT.



Opt. Loft



BASEMENT LEVEL

988 SQ.FT. UNFINISHED
963 SQ.FT. FINISHED

Specifications subject to change with or without notice.